

E350 - E350 PM

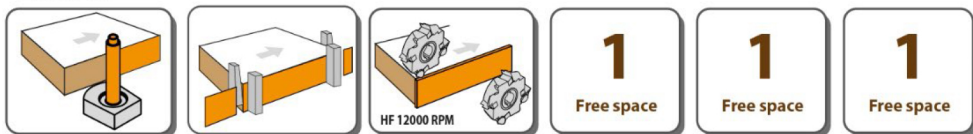
E350 Automatic edge bander with hot melt (EVA) glue pot with chain panel feeding E350PM
Automatic edge bander with hot melt (EVA) glue pot, chain panel feeding and pre-milling

[REQUEST INFORMATION](#)

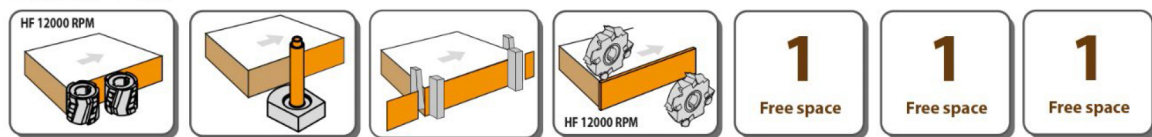


Composizione / Composition

E350



E350 PM



E350 E350PM

Maximum finishing quality

- Chain feeding system
- Pre-milling (E350PM)
- 3 free spaces for finishing units

High performance

- 7 m/min feed speed
- 45 mm panel height
- 2 mm edge coils

Minimum space occupied

- 2,30 m length

Easy to use

- Unit settings with a piece of edge
- Easy and intuitive use of machine

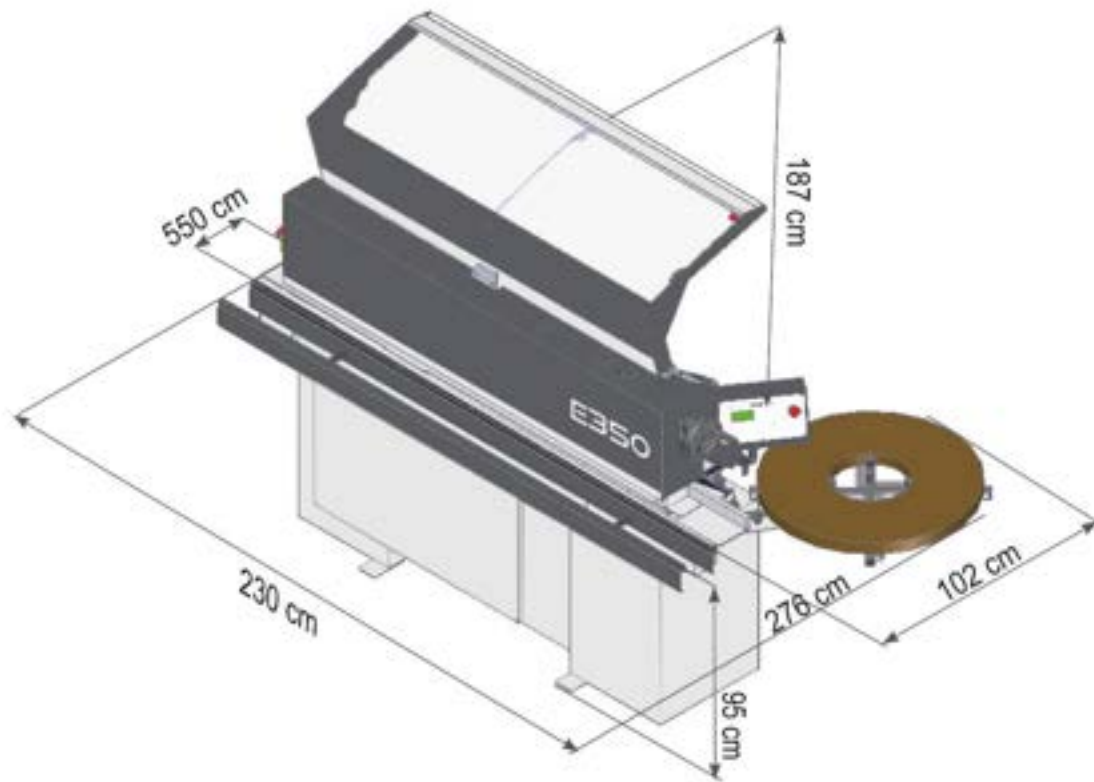


DO YOU WANT TO DISCOVER ALL THE FEATURES OF E350 - E350 PM?

DOWNLOAD THE BROCHURE

If you wish to receive the brochure in english, please send us a request, by filling the below contact form and we will send shortly.

OVERVIEW



Min./max. panel height	min 10 - max 45 mm
Min./max. edge thickness	0,4 - 2 mm (coil)
Maximum coil diameter	800 mm
Minimum panel length (side being processed)	210 mm
Minimum panel width	95 mm
Panel feed speed	7 m/min
N° 2 pre-milling motors HF (E350PM)	2 x 0,75 kW

Pre-milling tool rotation speed (E350PM)	12.000 RPM
Heating elements power	approx 1490 W (6 cartridges)
Flush trimming motor power	0,37 kW
Widia cutterblocks with combined profile	11.000 rpm- Ø 75 mm Z4 - radius 2 mm/bevel
Weight	approx 400 Kg (E350) - 420 Kg (E350PM)

TECHNICAL SPECIFICATIONS

DETAILS OF THE MACHINE



3 position infeed fence (E350 PM)

0-1-2 mm (according to edge thickness)



Chain panel feeding

- Firm grip of panel guaranteed by special non-slip rubber on the pads.
- Linear feeding ensured by double sliding tracks with a special geometric profile accurately machined with precision to a hundredth of a millimetre.
- Long lasting monolithic frame fully processed only in one cycle on a CNC machining centre.



Pressure bar with locking levers

Top pressure bar with a double row of rubber wheels mounted on bearings, with locking levers and position indicator



Pre-milling unit (E350PM)

INVISIBLE GLUEING LINE

- DIAMOND tools $\varnothing = 60$ mm H = 52 mm
- HF motors 200 Hz – 12.000 rpm – 0.75 kW (each)
- Dedicated suction system and blower for panel cleaning before glueing



E350 Glueing unit

PERFECT GLUEING, QUICK AND PRACTICAL SET-UPS

- 6 heating elements to guarantee uniform glue temperature.
- Motorized glue spreading roller with an internal electrical heating element.
- Teflon-coated glue pot to permit complete and rapid cleaning.



Pneumatic shear, pressure rollers, edge feeding system

DETAILS THAT MAKE THE DIFFERENCE

- Edge feeding synchronized with panel being processed
- Oscillatory movement of the cutting shear unit to guarantee perfect glueing
- Quick and precise positioning of the pressure rollers. The system “reads” the edge thickness, making mistakes impossible!



Trimming cut-off

- End trims front and rear excess edge
- Working cycle controlled by PLC
- Exclusion from control panel (PLC)



Flush trimming unit

- Flush trimming unit with vertical disc copiers as standard
- Possibility of processing for edges from 0.4-2 mm



Gruppo Spray anti-adesivizzante

PULIZIA SUBITO PERFETTA

- Funzione spray gestita dal controllo elettronico
- N.2 spruzzatori (inferiore e superiore) e serbatoio liquido



Anti-adherence / release agent spraying unit

INSTANT PERFECT CLEANING

- Spray function controlled by PLC
- 2 sprayers (lower and upper) and liquid tank